

GHD Monthly Newsletter

February 2023

The Global Help Desk (GHD), a part of the Office of Communications within the Institute for Basic Science (IBS), presents this monthly newsletter to introduce you to life in Korea and let you know some recent domestic news, holiday or event information, language support, recent IBS news, and free phone numbers to get help and support. All GHD newsletters are available online at the website Living in Korea at www.ibs.re.kr/livinginkorea. Hosted by IBS, it has hundreds of pages of contents and photos to help you thrive, not simply survive.

Living in Korea Highlight

If you are thinking of staying in Korea more long-term, you should consider some of the F class visas, specifically F-2 (residency) and F-5 (permanent residency). Some possible types are F-2-7, F-5-10, F-5-11 and F-5-15. There are 27 subtypes of F-5 visas, so there are a number of possibilities. Please visit these following sites for a [list of all visa types](#), [list of requirements for F-5 visas](#), and [information about the F-5-11 visa](#).

Domestic News and Notices



300 won in cashable points to be provided for every cafe beverage bought in reusable cups

Consumers will be given 300 won (\$0.24) in cashable points for every beverage they buy in a reusable cup at cafes, the environment ministry said Sunday, as part of a new waste-reduction program.

[Read more](#)



Korea to lift indoor mask mandate, mostly, on Jan. 30

One of the last countries in the world to do so, Korea has decided to lift its indoor mask mandate on Jan. 30. "The mandate will be adjusted to a recommendation," said Prime Minister Han Duck-soo in a Covid-19 response meeting in Seoul on Friday.

[Read more](#)

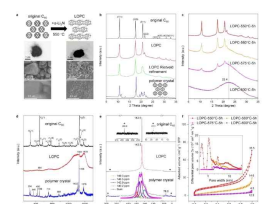
IBS News and Events



IBS The Scientist Who Chases After the First Rising Star at Dawn

In June 2022, the Institute for Basic Science (IBS) launched a new Pioneer Research Center (PRC) in the earth science field The Pioneer Research Center for Climate and Earth Science. The new PRC was established alongside its first research group, the 'Planetary Atmospheres Group'. Dr. LEE Yeon Joo (age 39), a researcher from the German Aerospace Center (DLR), was appointed as the CI (Chief Investigator) of this new Group.

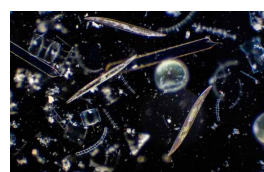
[Read more](#)



Discovery of a new form of carbon called Long-range Ordered Porous Carbon (LOPC)

Recently, a team of researchers from the Center for Multidimensional Carbon Materials within the Institute for Basic Science (IBS), South Korea led by Director Rodney RUOFF and his colleagues at the University of Science and Technology of China led by Professor Yanwu ZHU, reported a discovery of a new form of carbon.

[Read more](#)



Metabolic hack makes ocean algae more resilient to 21st century climate change

A study published in Science Advances by an international team of scientists provides clear evidence that marine phytoplankton are much more resilient to future climate change than previously thought. Combining data from the long-term Hawai'i Ocean Time-series program with new climate model simulations conducted on one of South Korea's fastest supercomputers, the scientists revealed that a mechanism, known as nutrient uptake plasticity, allows marine algae to adapt and cope with nutrient-poor ocean conditions expected to occur over the next decades in response to global warming of the upper ocean.

[Read more](#)

Regional Information



Title: X : The Korean Beauty
Period: 20 October 2022–19 February 2023
Venue: Ulsan Art Museum

[Learn more](#)



Foreign Language Guided Tours
Time: Refer to the link
Venue: National Museum of Korea, Seoul

[Learn more](#)

Let's Learn Korean!



[Click here](#) to learn 70 useful Korean phrases for making phrases!

And [click here](#) for a good introduction to the Korean language.

Individual Support

Phone Numbers

Emergency

119 or interpretation provided by 1330 Korea Travel Hotline

Korea Travel Hotline & Complaint Center

1330 or +82-2-1330

Website

24/7: Korean, English, Japanese, Chinese, Russian, Vietnamese, Thai, and Malay
08:00-19:00: Russian, Vietnamese, Thai, and Malay

Before Babel Brigade Korea (BBB Korea)

1588-5644

Website

24/7: English, Japanese, Chinese, Spanish, French, Russian, Italian, German, Portuguese, Arabic, Vietnamese, Mongolian, Polish, Turkish, Swedish, Thai, Bahasa Indonesia, Hindi, Bahasa Malaysia and Swahili

Global Help Desk

If you are associated with the Institute for Basic Science and wish to get in contact with the Global Help Desk, please send an email.

Events in Korea

KOREA.net

Festivals

[Website](#)

Exhibitions

[Website](#)

Performances

[Website](#)